

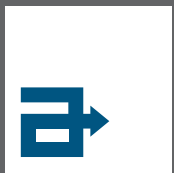


www.altro.com

Designed for possibilities.
Made for people.

Altro Orchestra





Altro Orchestra

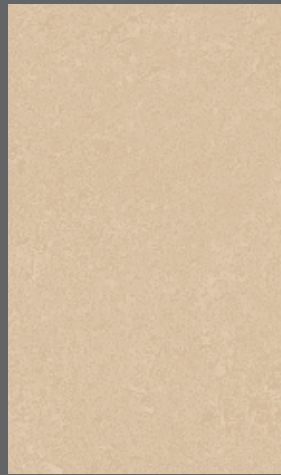
altro



Reggae | CH2801
WR422 / A1M200 / LRV 48



Romantic | CH2804
WR425 / A1M200 / LRV 51



Classical | CH2807
WR428 / A1M200 / LRV 50



Ragtime | CH2810
WR431 / A1M200 / LRV 53



Pop | CH2805
WR426 / A1M200 / LRV 32



Latin | CH2803
WR424 / A1M200 / LRV 32



Country | CH2808
WR429 / A1M200 / LRV 26



House | CH2811
WR432 / A1M200 / LRV 26



Flamenco | CH2806
WR427 / A1M200 / LRV 12



Salsa | CH2802
WR423 / A1M200 / LRV 20



Motown | CH2809
WR430 / A1M200 / LRV 10

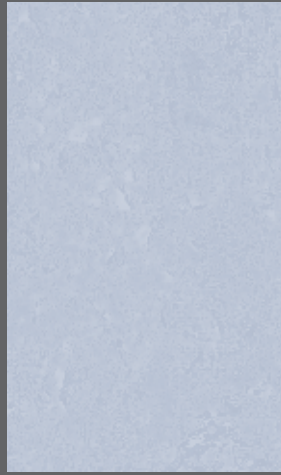


Folk | CH2812
WR433 / A1M200 / LRV 15

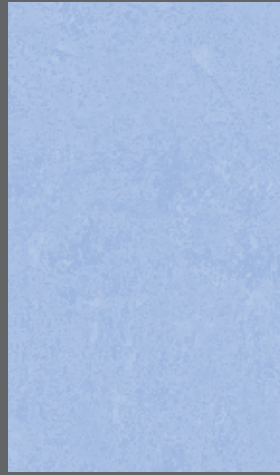
Codes: WR = weld rod, A1M = mastic, LRV = light reflectance value
Light Reflectance Values measured in accordance with BS8493:2008.
Exact material match with samples cannot be guaranteed.



Fusion | CH2813
WR434 / A1M200 / LRV 49



Urban | CH2816
WR437 / A1M200 / LRV 50



Swing | CH2819
WR440 / A1M200 / LRV 49



Punk | CH2822
WR443 / A1M200 / LRV 43



Chant | CH2814
WR435 / A1M200 / LRV 26



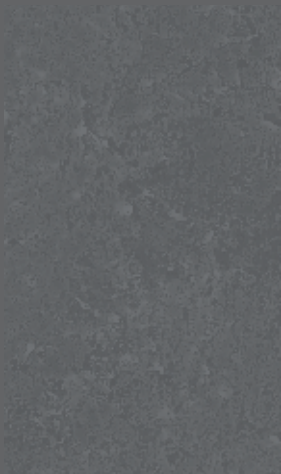
Soul | CH2817
WR438 / A1M200 / LRV 29



Rap | CH2820
WR441 / A1M200 / LRV 30



Jungle | CH2823
WR444 / A1M200 / LRV 24



Club | CH2815
WR436 / A1M200 / LRV 17



Metal | CH2818
WR439 / A1M200 / LRV 16

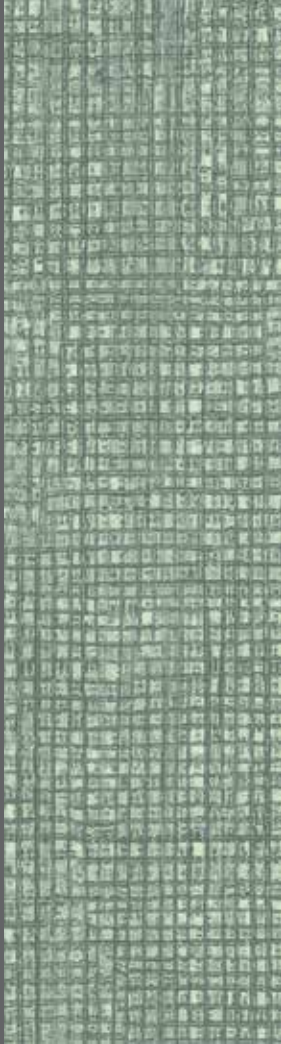


Gospel | CH2821
WR442 / A1M200 / LRV 17



Jazz | CH2824
WR445 / A1M200 / LRV 15

Códigos: WR = Cordón de soldadura, A1M = Mástique, LRV = Valor de reflectancia de la Luz
Los Valores de Reflectancia de la luz se miden de acuerdo con BS8493:2008.
Las muestras no pueden garantizar un color exacto.



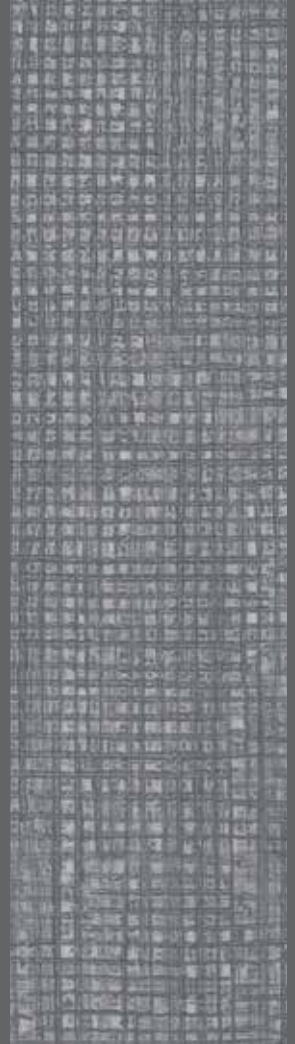
Guitar | CH2828
WR449 / A1M200 / LRV 29



Trumpet | CH2825
WR446 / A1M200 / LRV 37



Glockenspiel | CH2827
WR448 / A1M200 / LRV 23



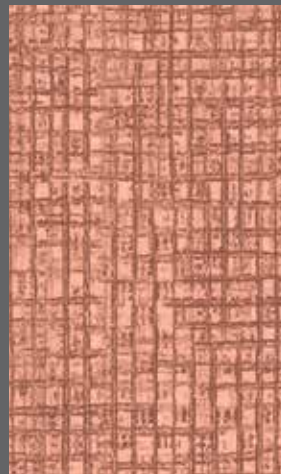
Cello | CH2829
WR450 / A1M200 / LRV 24



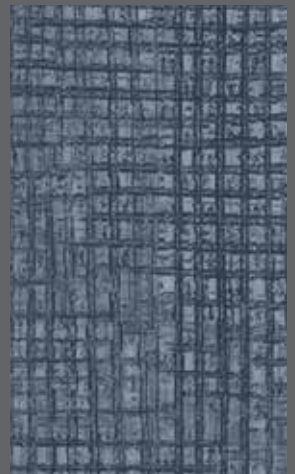
Banjo | CH2826
WR447 / A1M200 / LRV 38



Clarinet | CH2832
WR453 / A1M200 / LRV 34



Harp | CH2830
WR451 / A1M200 / LRV 28



Bassoon | CH2831
WR452 / A1M200 / LRV 17

Abkürzungen: WR = Schweißschnüre, A1M = Altro mastic Dichtmasse, LRV = Lichtreflexionswert
Lichtreflexionswerte gemäß BS8493: 2008.
Eine exakte Übereinstimmung des Materials mit Mustern kann nicht garantiert werden.



Violin | CH2834
WR455 / A1M200 / LRV 31



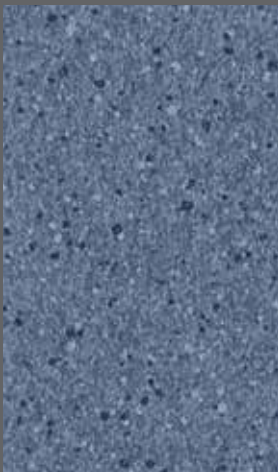
Chimes | CH2836
WR457 / A1M200 / LRV 52



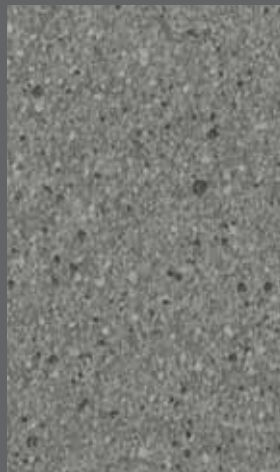
Oboe | CH2835
WR456 / A1M200 / LRV 34



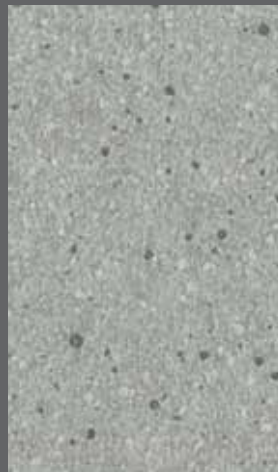
Bongo | CH2840
WR461 / A1M200 / LRV 27



Drum | CH2837
WR458 / A1M200 / LRV 18



Flute | CH2833
WR454 / A1M200 / LRV 22



Trombone | CH2839
WR460 / A1M200 / LRV 39











Piano | CH2838
WR459 / A1M200 / LRV 19





i Technical information / Información técnica / Technische Informationen

Flooring type Tipo de pavimento Belagsart	Slip resistance Resistencia al deslizamiento Rutschsicherheit	Thickness Espesor total Gesamtdicke	Wear layer Capa de uso Nutzschichtdicke	Weight Peso Flächengewicht	Roll dimensions Dimensiones del rollo Rollenformat	Fire performance Reacción al fuego Brandverhalten	Sound Insulation Aislamiento acústico Trittschallminderung
							
EN 651	DIN 51130 / BGR 181 EN 13893	EN ISO 24346	EN ISO 24340	EN ISO 23997	EN ISO 24341	EN 13501-1 EN ISO 9239-1 EN ISO 11925-2	EN ISO 10140
R10 Floor Suelo de Antideslizante Heterogener Bodenbelag	R10 DS For enhanced safety, see our ranges that offer sustained slip resistance for life.	2.85mm	0.7mm	2.6kg/m ²	2m x 20m = 40m ²	Cfl s1	Approx 15dB ca. 15 dB
For further technical information please visit www.altro.com / www.asf.com.au		Si desea obtener más información técnica, visite www.altroscandess.com			Weitere technische Informationen finden Sie auf unserer Website www.altro.com		



17 | Debolon Dessauer Bodenbeläge GmbH & Co. KG, Ebertallee 209, 06846 Dessau-Roßlau | DIN EN 651 | DOP-No. P200. | Silence-RN-D029 | Reaction to fire: Cfl-s1 | Slip resistance: DS | Formaldehyde: E1 | DIN EN 14041:2008 | 1658 | Resilient floor covering to be used within a building



Altro Limited a company certified by SGS to ISO 9001 and ISO 14001.



Indication of the level of emissions of volatile substances in the ambient air that are posing a toxic hazard on being inhaled, rated on a scale from A+ (very low emissions) to C (high emissions).



P Installation and Maintenance

Install according to installation instructions and codes of practice. Refer to cleaning card. Failure to install and maintain flooring according to installation instructions can affect performance and slip resistance. Protect from other trades. Oil residue, certain cleaning agents, asphalt and anti-oxidants in some rubber can cause traffic stain. Caution, Ketone / aromatic solvents. For further technical information please visit www.altro.com

Instalación y Mantenimiento

Instalar según instrucciones y códigos de prácticas y seguir instrucciones de limpieza. Una mala instalación o un mantenimiento incorrecto puede afectar al rendimiento y a la resistencia al deslizamiento del suelo. Proteja el suelo durante la instalación de otros gremios. Los restos de aceite, algunos productos de limpieza, asfalto o antioxidantes pueden crear manchas de tráfico. Precaución con los solventes de Cetona o aromáticos. Si desea obtener más información técnica, visite www.altroscandess.com

Installation und Pflege

Verlegung gemäß Anleitung und empfohlener Vorgehensweise. Verweisen Sie auf die Reinigungskarte. Erfolgt Verlegung und Pflege des Bodenbelags nicht gemäß Anleitung, können Leistung und Rutschfestigkeit beeinträchtigt werden. Vor anderen Gewerken schützen. Ölrückstände, bestimmte Reinigungsmittel, Asphalt und Antioxidantien können in einigen Belagsarten Flecken hinterlassen. Vorsicht, Ketone / aromatische Lösungsmittel. Weitere technische Informationen finden Sie auf unserer Website www.altro.com

G Sustainability / Sostenibilidad / Nachhaltigkeit



†A+ BRE generic green guide rating for resilient flooring, full details available at www.thegreenguide.org.uk

Posee una calificación A+ en la Guía Verde de Prescripción Global del Método de Evaluación Medioambiental BRE. Para más información, visita www.thegreenguide.org.uk

A+ BRE Global's Green Guide™, der allgemeine Umweltleitfaden für elastische Bodenbeläge; weitere Informationen finden Sie unter www.thegreenguide.org.uk

 Altro, Designed for possibilities. Made for people. Altro Orchestra and Altro Easyclean technology are trademarks of Altro Limited.

 +44 (0) 1462 707 700

 +34 91 549 5230

 +61 3 9764 5666

 www.altro.com

 www.altroscandess.com

 www.asf.com.au

 enquiries@altro.com

 suelos@altroscandess.com

 info@asf.com.au