



New shades
featuring
AltroBead™
Technology

Giving a unique,
soft and domestic look!

Altro Aquarius™

Shoe and barefoot
safety flooring

www.altro.com

the future is safer with altro

Altro Aquarius™

Safety flooring / Suelos de seguridad / Sicherheitsbodenbelag



Lighthouse PX2001
WR291 / A1M01 / LRV 70



Cuttlefish PX2002
WR385 / A1M385 / LRV 50



Deckchair PX2013
WR396 / A1M396 / LRV 50



Jellyfish PX2005
WR388 / A1M388 / LRV 46



Breakwater PX2003
WR386 / A1M20 / LRV 42



Sea Urchin PX2014
WR397 / A1M397 / LRV 34



Porthole PX2007
WR390 / A1M390 / LRV 30



Fisherman PX2009
WR392 / A1M392 / LRV 48



Houseboat PX2015
WR398 / A1M398 / LRV 25



Anchor PX2008
WR391 / A1M82 / LRV 16



Starfish PX2010
WR393 / A1M393 / LRV 21

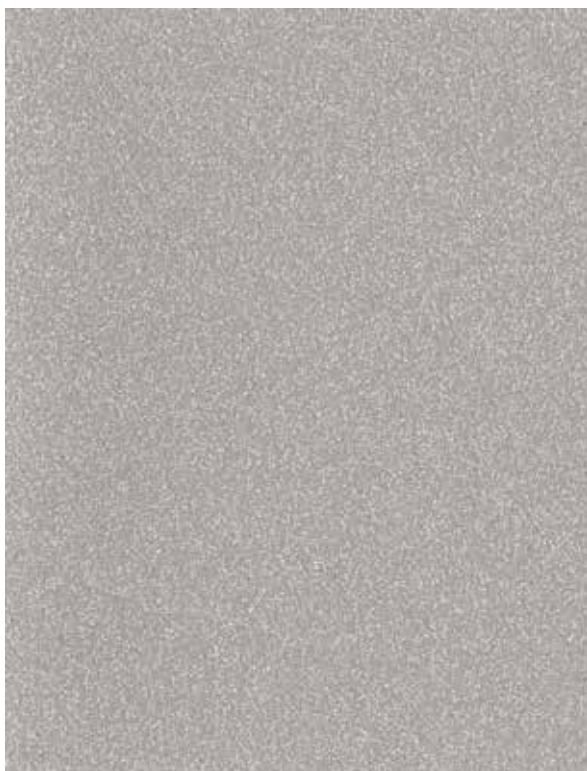


Windbreak PX2016
WR399 / A1M399 / LRV 38

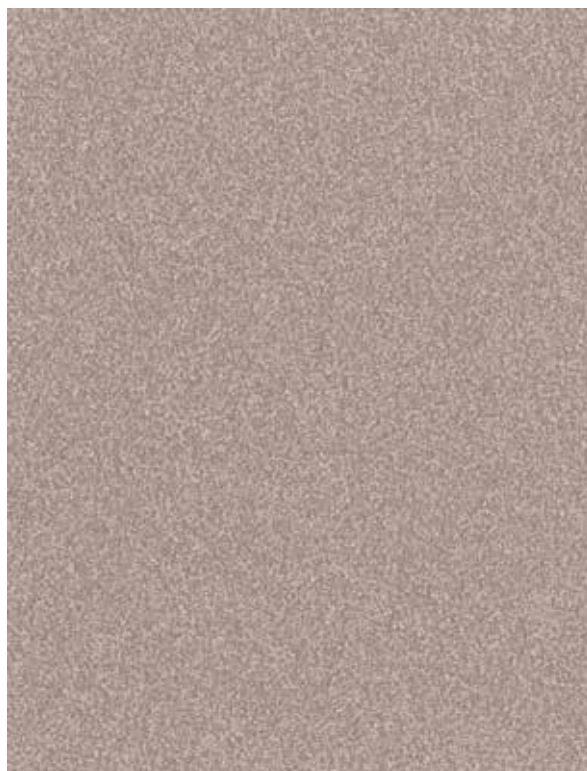
Codes: WR = weld rod, A1M = mastic, LRV = light reflectance value

Códigos: WR = Cordón de soldadura, A1M = Mástique, LRV = Valor de reflectancia de la Luz

Abkürzungen: WR = Schweißschnüre, A1M = Altro mastic dichtmasse, LRV = Lichtreflexionswert



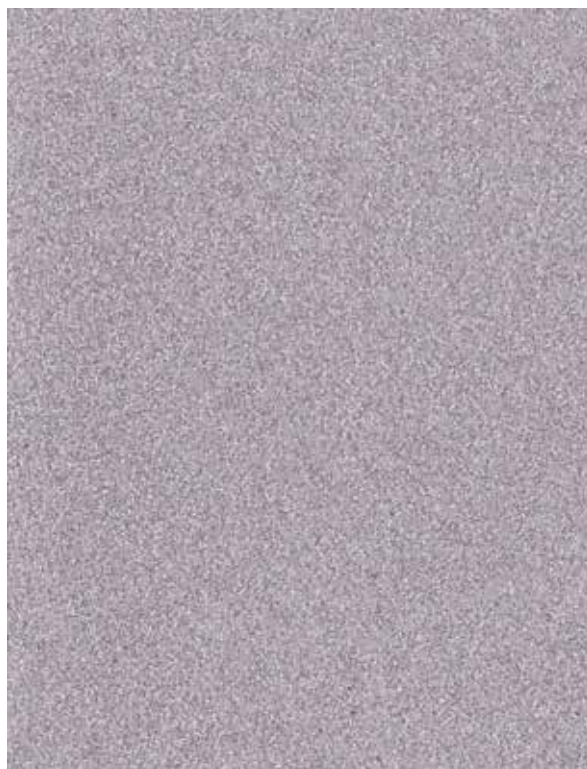
Shoreline PX2006
WR389 / A1M389 / LRV 38



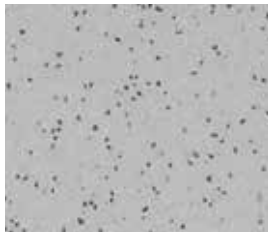
Driftwood PX2004
WR387 / A1M387 / LRV 32



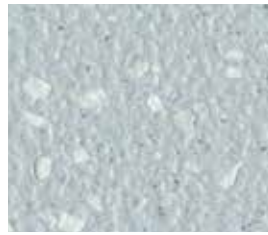
Seahorse PX2011
WR394 / A1M394 / LRV 47



Beach Hut PX2012
WR395 / A1M395 / LRV 37



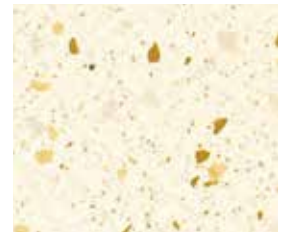
Cygnet AQ2004
WR287 / A1M79 / LRV 46



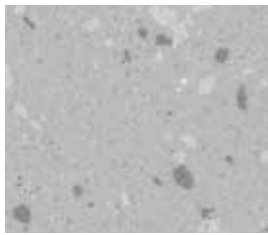
Sea Snail AQI2024
WR370 / A1M370 / LRV 50



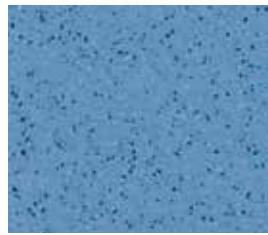
Iguana AQ2021
WR297 / A1M20 / LRV 41



Swan AQI2012
WR291 / A1M1 / LRV 75



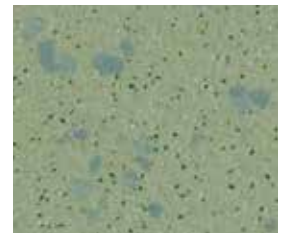
Puffin AQI2005
WR287 / A1M79 / LRV 46



Dragonfly AQ2001
WR292 / A1M292 / LRV 33



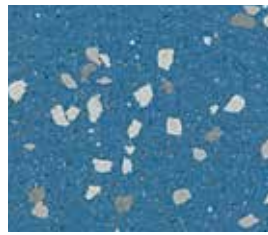
Vole AQ2010
WR289 / A1M265 / LRV 43



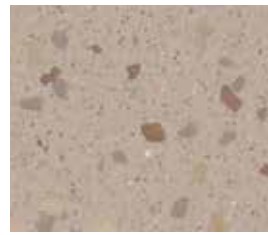
Treefrog AQI2003
WR293 / A1M271 / LRV 33



Walrus AQ2007
WR261 / A1M81 / LRV 29



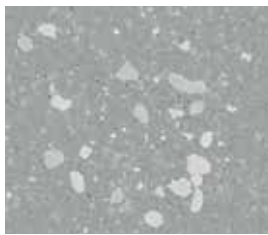
Blue Penguin AQI2002
WR288 / A1M71 / LRV 24



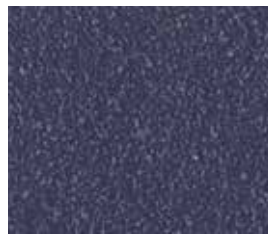
Terrapin AQI2009
WR289 / A1M265 / LRV 40



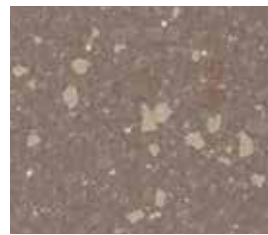
Gosling AQI2023
WR369 / A1M369 / LRV 59



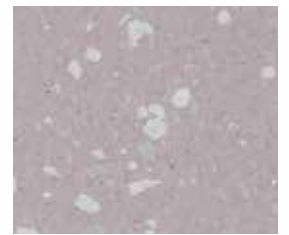
Tern AQI2008
WR261 / A1M81 / LRV 31



Newt AQ2022
WR368 / A1M368 / LRV 10



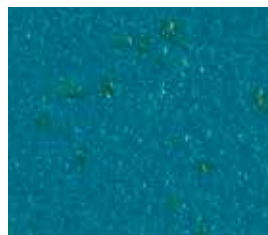
Otter AQI2006
WR290 / A1M239 / LRV 26



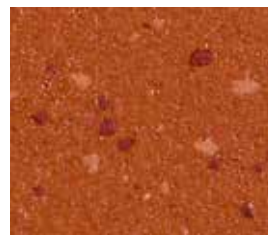
Salamander AQI2011
WR294 / A1M294 / LRV 41



Hippo AQI2013
WR301 / A1M82 / LRV 11



Mallard AQI2015
WR302 / A1M302 / LRV 13



Coral Crab AQI2014
WR300 / A1M42 / LRV 14



Spoonbill AQI2016
WR303 / A1M303 / LRV 11

Light Reflectance Values measured in accordance with BS8493:2008. Exact material match with samples cannot be guaranteed.

No podemos garantizar que el material del suelo de seguridad coincida exactamente con el de las muestras.

Eine exakte übereinstimmung des materials mit mustern kann nicht garantiert werden.

All information is correct at the time of print and is subject to change without prior notice.



Typical Applications:

Bathrooms. Showers. Changing rooms*. Swimming pool surrounds. Saunas. Spas.
Wet environments in social care: home adaptations, social housing. Student accommodation.

Zonas de instalación recomendadas:

Aseos. Duchas. Vestuarios. Alrededores de piscinas. Saunas. Zonas húmedas en centros de asistencia social, adaptaciones en las viviendas particulares, viviendas sociales y alojamientos de estudiantes.

Typische Anwendungsbereiche:

Badezimmer. Duschen. Umkleieräume. Schwimmbadränder. Saunen. Feuchte Umgebungen in Sozialwesen, Wohnungsbau, sozialem Wohnungsbau. Studentenunterkünfte.



Slip resistance / Resistencia al deslizamiento / Rutschfestigkeit

Tested with / Testado con / Getestet mit:

Soapy water / Agua con jabón / Seifenwasser

Shower gel / Gel de ducha / Duschgel

Talcum powder / Polvos de talco / Talkumpuder

Conditioner / Suavizante / Haarspülung

Glycerine / Glicerina / Glycerin



Suitable for:

- Wet and dry areas
- All shoes or barefeet



Adecuado para:

- Zonas húmedas y secas
- Para todo tipo de calzado o con pies descalzos



Geeignet für:

- Nasse und trockene Bereiche
- Mit Schuhen oder barfuß



Looks great with / Resultados espectaculares con / Harmoniert besonders in Kombination mit:

Altro Whiterock White™ / Altro Whiterock Satins™ / Altro Whiterock Chameleon™
/ Altro Whiterock Digiclad™ / Altro Suprema™ / Altro Wood Safety™

i Technical information / Información técnica / Technische Informationen

Flooring type Tipo de pavimento Belagsart	Slip resistance Resistencia al deslizamiento Rutschsicherheit	Thickness Espesor total Gesamtdicke	Weight Peso Flächengewicht	Roll dimensions Dimensiones del rollo Rollenabmessungen	Fire performance Reacción al fuego Brandverhalten
EN 13845 EN 13553	PTV EN 13845 EN 13893 DIN 51130 DIN 51097	EN 428	EN 430	EN 426	EN 13501-1 EN ISO 9239-1 EN ISO 11925-2
Safety flooring Suelo de seguridad antideslizante Sicherheitsbodenbelag	≥ 50 (slider 96) ESf & ESb DS R11 Class B	2 mm	2.6 kg/m ²	2 m x 20 m - 40 m ²	Bfl s1 ≥8kW/m ² pass, conforme, bestanden



For further technical information please visit www.altro.com / www.asf.com.au
 Si desea obtener más información técnica, visite www.altroscandess.com
 Weitere technische Informationen finden Sie auf unserer Website www.altro.de

Patent No. GB 2 462 167
 Patent No. GB 2 496 644



g Sustainability / Sostenibilidad / Nachhaltigkeit

Altro are the first safety flooring manufacturer to recycle traditional safety flooring in-house



A+ BRE generic green guide rating for safety flooring, full details available at www.thegreenguide.org.uk



+44 (0) 1462 707 700

www.altro.com

enquiries@altro.com

+34 91 549 5230

www.altroscandess.com

suelos@altroscandess.com

+61 3 9764 5666

www.asf.com.au

info@asf.com.au



CE
 EN14041
 0120
 GB06/72664
 Manufactured by:
 Altro Ltd, Works Road
 Letchworth Garden City
 SG6 1NW, United Kingdom

EN13845



Installation and Maintenance

All Installations in accordance with Altro safety flooring instructions and local codes of practice. Please refer to Altro cleaning card for maintenance advice. Failure to install and maintain Altro flooring in accordance with installation instructions can affect its performance and slip resistance. Floors should be protected from other trades and thoroughly cleaned before handover.

Traffic stain can be caused by oil residue, certain cleaning agents, asphalt and anti-oxidants in some types of rubber.

Caution

ketone / aromatic solvents. Please contact Altro for further technical advice regarding staining and chemical resistance. Certain chemicals may cause staining of vinyl.